



# ARCHETYPE ALLIANCE YOUR GLOBAL PARTNER

JAPAN



BANGLADESH | CAMBODIA | CHINA | FRANCE | INDIA | INDONESIA | KAZAKHSTAN | LAOS | MONGOLIA | MYANMAR | PHILIPPINES | QATAR | SINGAPORE | SRI LANKA | THAILAND | VIETNAM

# Archetype Alliance

- In 2018, Archetype has been able to have a full footprint covering almost all Asia, with entities capable of designing and managing projects across real estate and industrial sectors.
- In 2019, in response to clients' demand for a Global Presence & Global Partnership, Archetype has decided to set up the Archetype Alliance which allows us to participate in projects in neighboring countries and new continents such as Africa and South America, where we intend to have an active role.
- Archetype has selected premium firms having the same clients and sharing the same values, technical vision, agility and innovation spirit that we are known for.





### Archetype Offices

- Bangladesh—Dhaka
- Cambodia—Phnom Penh
- China—Shanghai
- France—Paris, Lille & Marseille
- India—Chennai, Delhi & Mumbai
- Indonesia—Jakarta & Bali
- Kazakhstan—Almaty
- Laos—Vientiane
- Mongolia—Ulaanbaatar
- Myanmar—Yangon
- Philippines—Manila
- Singapore—Singapore
- Sri Lanka—Colombo
- Thailand—Bangkok & Koh Samui
- Vietnam—Hanoi & HCMC

### Archetype Alliances

- Belgium—Brussels
- Brazil—Porto Alegre
- Cameroon—Douala
- Ivory Coast—Abidjan
- Japan—Tokyo
- Malaysia—Kuala Lumpur
- Mexico—Mexico City
- Russia—Moscow
- South Korea—Seoul

# Alliance Network

# Why Archetype & PAE

- Archetype and PAE have both developed extensive activities in Asia. In 2019, we decided to partner up, in order to take advantage of our complementarity in terms of expertise and geographical footprint.
- Archetype and PAE share the same values in Ethics, Safety, Environment, and People.
- Archetype and PAE offer the best combination of services to offer our clients a one-stop service, from Project Initiation until facility management.
- Both companies aim to deliver excellence to their clients to ensure cost, time and quality in any projects.

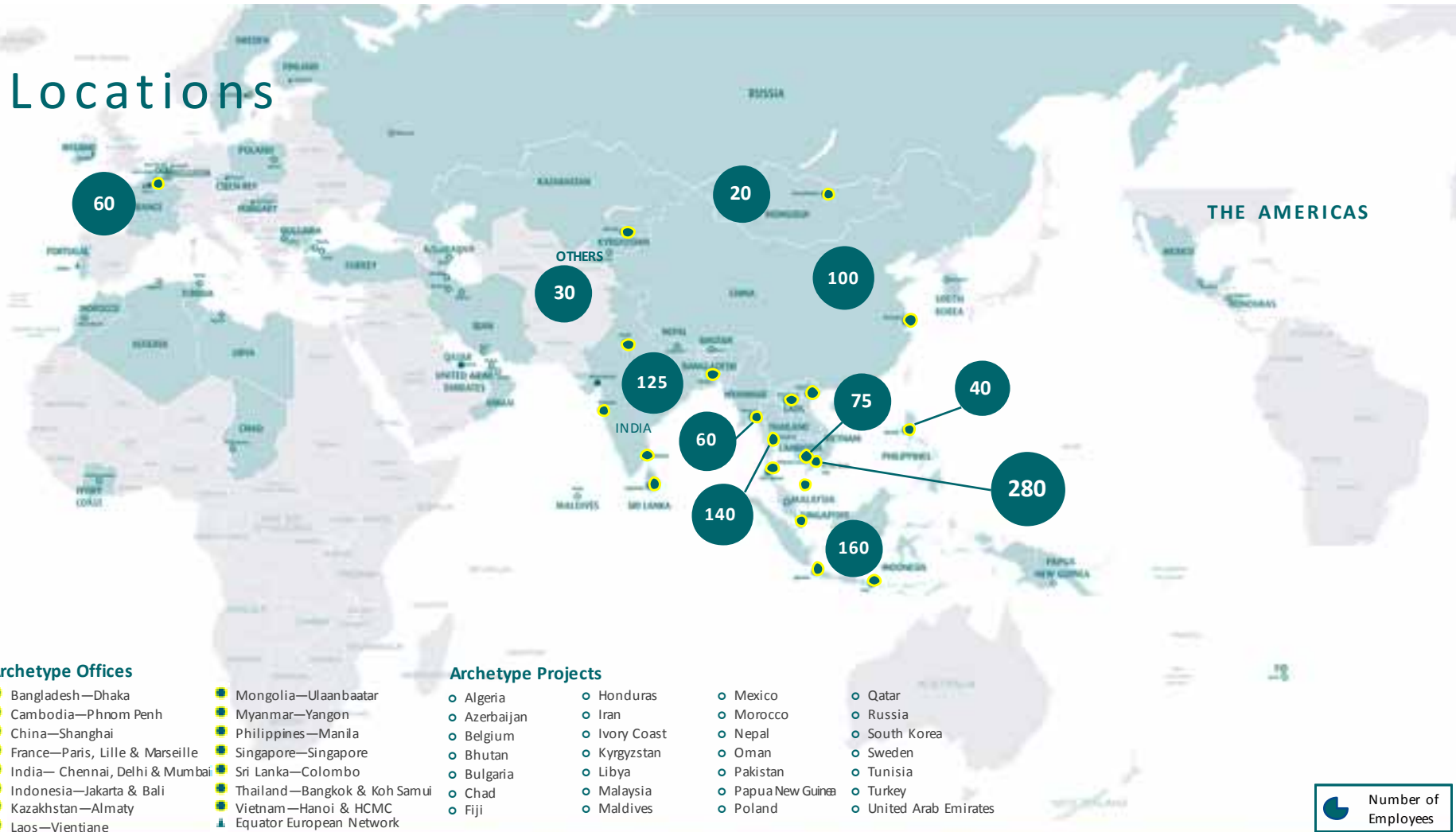
[Combined ACT+ PAE References Mixture Pictures]



# ABOUT ARCHETYPE GROUP



# Locations





# Archetype Markets & Sectors

## Buildings & Real Estate

- Hospitality
- Mixed-use High rise buildings
- Residential
- Commercial & Retail
- Healthcare
- Public Facilities



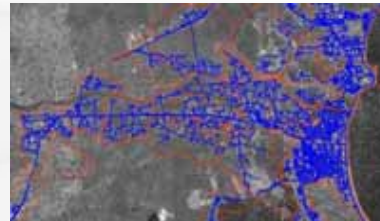
## Industry & Manufacturing

- Pharmaceutical & Life Sciences
- Agriculture, Food & Beverage
- Chemicals
- Manufacturing & Assembling
- High-tech
- Automotive & Heavy Equipment



## Energy & Infrastructure

- Power
- Oil & Gas
- Geographic Information Systems (GIS)
- Water & Environment
- Transportation
- Urban & Leisure Development





# Archetype Group Scope of Services



ARCHITECTURE & PLANNING



BUILDING & INFRASTRUCTURE ENGINEERING



PROJECT & COST MANAGEMENT



INDUSTRIAL & PROCESS ENGINEERING



# Buildings & Real Estate





# Industry & Manufacturing



BASF | Thailand



Texas Instrument | Malaysia



Michelin | India



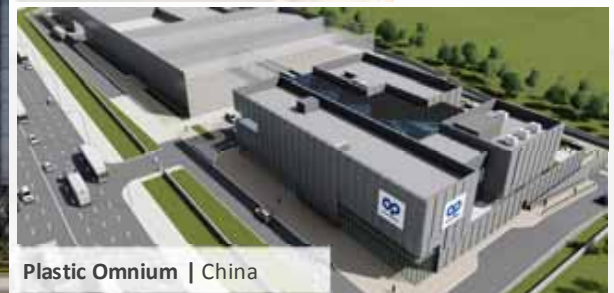
Crown Factory | Myanmar



Khmer Brewery | Cambodia



Medochemie Factory | Vietnam



Plastic Omnium | China

# Energy & Infrastructure



Eco-city Astana | Kazakhstan



Maldives International Airport | Maldives



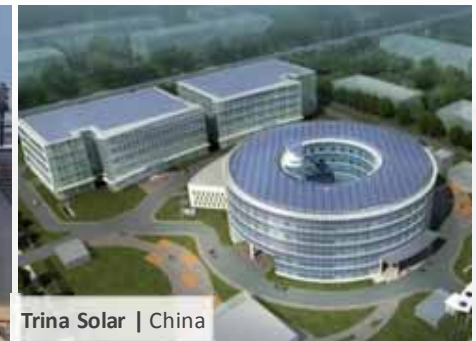
Organica Waste Water Treatment | Indonesia



Phong Dien Solar Power Plant | Vietnam



IOCL Madurai and Trichy | India



Trina Solar | China



# ABOUT PAE

Celebrating more than 60 years of excellence and integrity"

Since 1955 PAE Design and Facility Management has evolved into one of the most progressive providers of both Architectural Design and Facility Services in Japan

PAE

The image features a large, dark blue curved shape at the top containing the white text 'PAE'. Below this, a dark blue line curves across the page, connecting six circular nodes. The nodes contain text describing the company's history and achievements. The line starts at the bottom left and curves upwards towards the top right, ending in a large blue arrow pointing upwards.

Founded in  
1955

Solid Partner of  
International  
Firms in Japan  
It's Founding

Multi-  
disciplinary  
practice

First Class  
Architectural  
Design  
License

Presence in  
Over 70  
countries

Over  
23,000  
Employees



# Locations



# PAE Services & Markets



# Architecture & Engineering



The HSBC Limited | Japan



Morgan Lewis & Bockius LLP | Tokyo



PRUDENTIAL TOWER | Tokyo



Nike Japan | Tokyo



Teradyne K.K. | Kumamoto

# Facility Management



Apple Store Japan | Tokyo / Sapporo / Sendai / Nagoya / Kyoto / Osaka / Fukuoka





# Building Technologies



# Project Management



Universal Robot | Tokyo Japan



Hartford Life Insurance | Tokyo Japan



Teradyne K.K. | Kumamoto Japan



CHANEL Store | Tokyo Japan



Nike | Fukuoka Japan



Banana Republic | Tokyo Japan

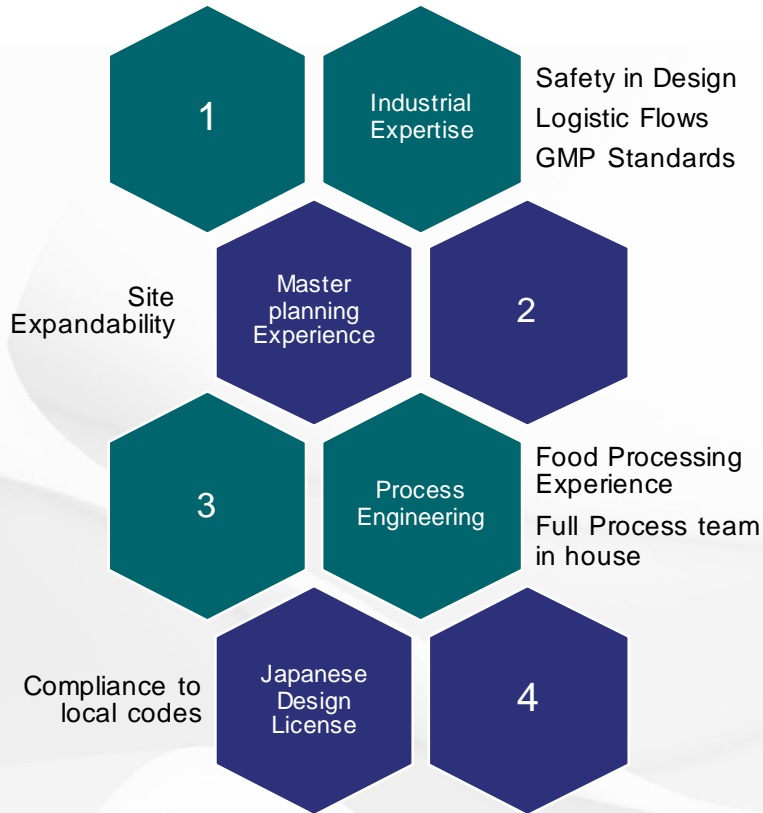




# PROJECT ORGANIZATION

# Project Organization

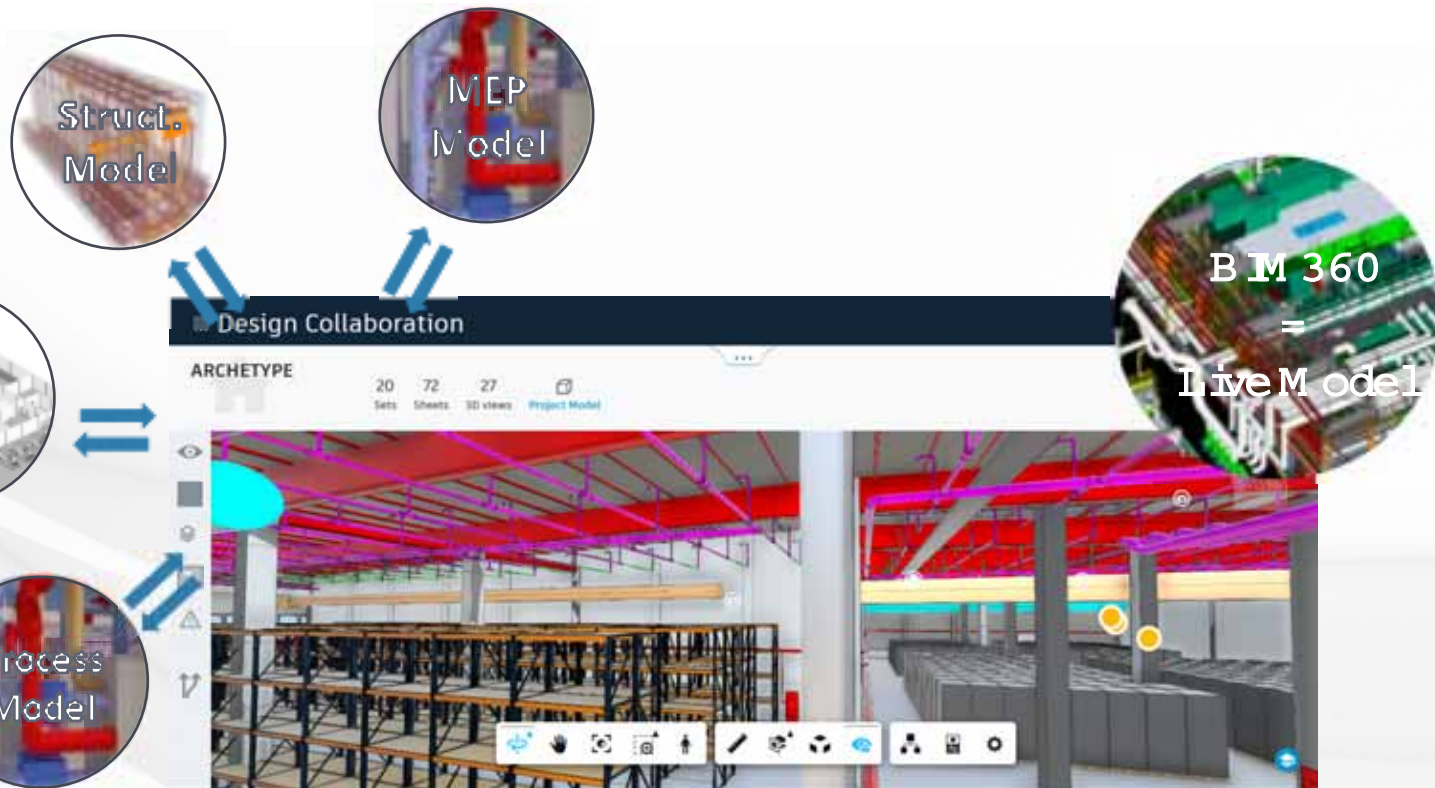
## Expertise Combination



Masterplan & ConceptD	Basic D	Detailed D	Procurement & Construction M
Design Brief Architectural & Building + Process Concept Engineering	Architectural & Building + Process Engineering Basic	Process Engineering Detail Design Technical Coordination	Technical Assistance
Site Audit Design Review Code Compliance	Site Audit Design Review Code Compliance	Architectural & Building Detailed Engineering Tender package Preparation	Procurement & Construction Management

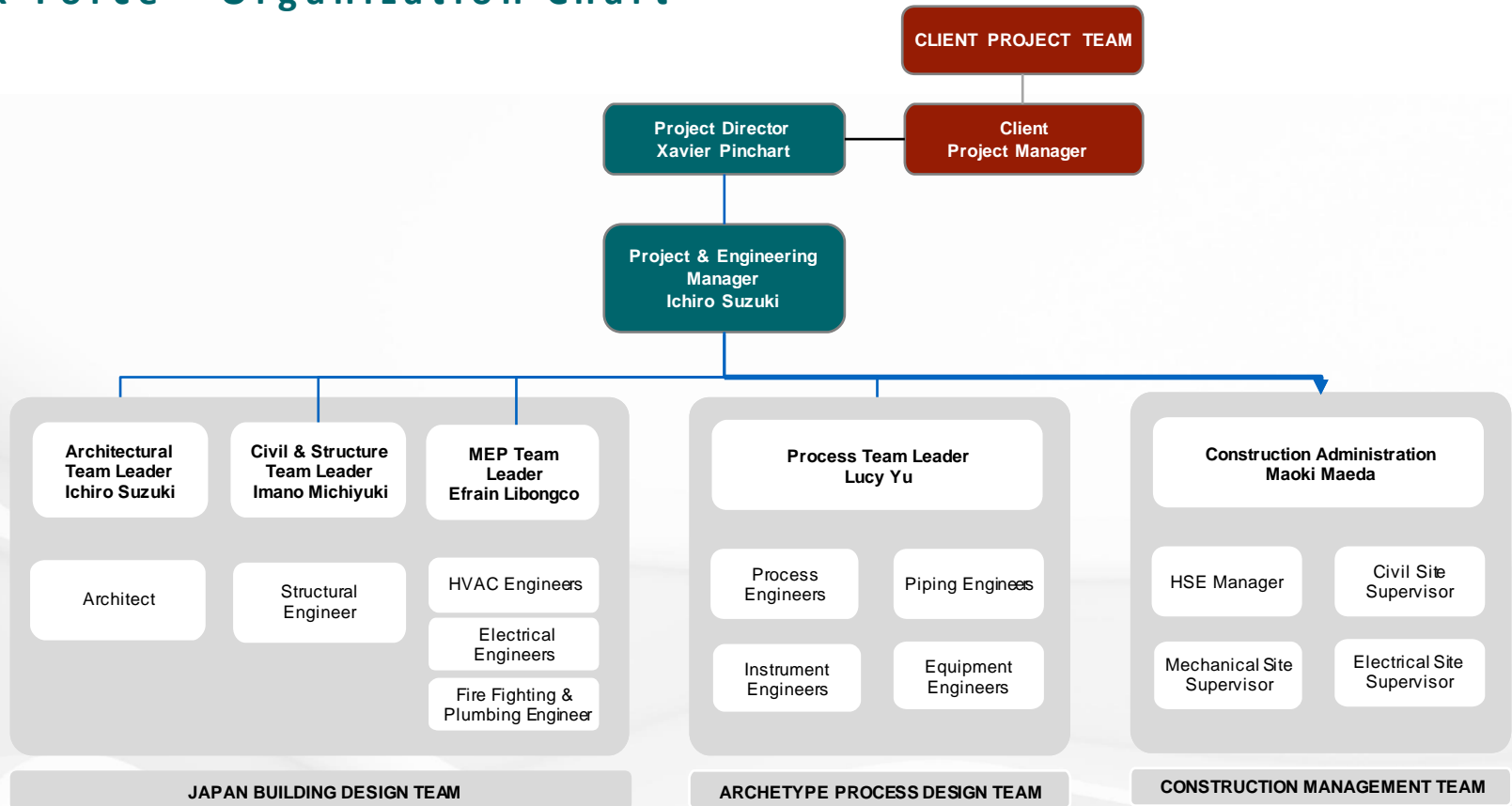
# Project Organization

Seamless Multidisciplinary Team Design Collaboration



# Project Organization

## Task Force - Organization Chart





# Project Organization

## Team Key People



**Xavier Pichart**  
Project Director

Xavier has been in Asia for more than 7 years. He has successfully managed an M & E consultant company in Hanoi for 5 years before taking the role of Managing Director of Archetype Thailand in 2018. He has now moved to Japan to develop Archetype presence in the archipelago and support project execution.



**Ichiro Suzuki**  
Project & Engineering Manager  
Architectural Team Leader

Mr. Suzuki is a licensed 1st Class architect and a 1st Class Building Equipment Engineer with over 40 years of practice. He has experienced many varied work project types and clients as Apple, Teradyne KK, Hotel PJ Palau, Housing developers, Headquarter Building PJ Xian, Kuwait Embassy Tokyo, US Government, and Japanese Government. Mr. Suzuki graduated from Tokyo University with Bachelor's and Master's degrees in Architecture and is a member of the JIA and AIA.



**Inano Michiyuki**  
Civil & Structure Team Leader

Mr. Inano has more than 20 years of experience in the US Military Design in Japan having worked with several AE firms in the past. He worked with companies that were contacted for NAVFAC FEEDs for Civil Engineering, Structural/Foundation Engineering, and Environmental Engineering. He has deep knowledge of engineering design and project processes and is currently leading the Team of PAEs capable and experienced Civil/ Structural Engineers.



**Efraim Libongco, PEng**  
MEP Team Leader

Mr. Libongco has more than 30 years of experience in military, industrial, and commercial projects as a mechanical design engineer for various projects in the Philippines, Canada, Saudi Arabia, and Japan. He worked at various architecture and engineering firms, EPCM companies, and contractors. Experience in preparing/supporting feasibility studies, site survey reports/studies, and field assignments as an on-site and module fabrication yard construction engineering support member.



**Lucy Yu**  
Process Team Leader

Ms. Lucy Yu has over 16 years of experience in process design of chemical plants. In her position as process engineer, she has been involved in many technology negotiations with contractors and clients, engineering and technology management practices in various projects. She is familiar with international engineering project management and engineering execution.



**Maoki Maeda**  
Construction Administration

Mr. Maeda is an architect specializing in Construction Administration, including Scheduling Management, Quality Management, Construction Vendor Coordination, building, and room layout. Construction Supervision for Sea Wood Kurin Resort on Kurin Island, Okinawa is one of Mr. Maeda's most recent projects.



OUR REFERENCES



# TERADYNE K.K.

KUMAMOTO ■ JAPAN

FACTORY ■ LABORATORY ■ OFFICE ■ 5600 M<sup>2</sup>

ARCHITECTURAL / STRUCTURAL / MEP DESIGN ■ PROJECT MANAGEMENT ■

CONSTRUCTION ADMINISTRATION



# MORRISON & FOERSTER LLP

TO KYO ■ JAPAN

LAW FIRM OFFICE ■ 6250 M<sup>2</sup>

INTERIOR DESIGN ■ PROJECT MANAGEMENT ■ CONSTRUCTION ADMINISTRATION





# GUCCI IN ZA

TO KYO ■ JAPAN

RETAIL SHOP ■ 2200 M<sup>2</sup>

LOCAL ARCHITECT ■ INTERIOR / MEP DESIGN



# HENKEL ADHESIVE SOUTH KOREA

INCHOEN ■ SOUTH KOREA

ADHESIVE ELECTRONICS MATERIALS PLANT ■ 8,200 M<sup>2</sup>

ARCHITECTURE ■ ENGINEERING





## KELLOGG'S FACTORY

NEG ERISEMBLAN ■ MALAYSIA

POTATO CHIPS FACTORY ■ 50,000 M<sup>2</sup>

ARCHITECTURE ■ ENGINEERING ■ PROJECT MANAGEMENT ■ COST MANAGEMENT (EPCM)

HSE MANAGEMENT ■ LEED CONSULTANCY SERVICE



LEED Silver  
certification



# DIANA PET FOOD PROJECT

ANHUI ■ CHINA

FACTORY ■ 11,000 M<sup>2</sup>

ARCHITECTURE ■ ENGINEERING ■ PROJECT MANAGEMENT ■ COST MANAGEMENT (EPCM)

HSE MANAGEMENT





## MARS PETCARE FACTORY

CHONBURI ■ THAILAND

PET FOOD FACTORY ■ 20,000 M<sup>2</sup>

ARCHITECTURE ■ ENGINEERING ■ COST MANAGEMENT ■ CONSTRUCTION MANAGEMENT (EPCM)

INTERIOR DESIGN



## MARS PET FOOD PROJECT

TIANJIN ■ CHINA

FACTORY ■ 67,000 M<sup>2</sup>

WET & DRY PROCESS ENGINEERING



# THANKS

[www.archetype-group.com](http://www.archetype-group.com)

Shaping  
Tomorrow

The logo for 'Shaping Tomorrow' features a stylized white graphic element above the text. The graphic is a continuous, flowing line that forms a shape reminiscent of a stylized 'A' or a protective arch, with a small loop at the bottom right.